



Printed on unbleached 100% post consumer paper.

**West Yellowhead**  
RECYCLES

www.westyellowheadrecycles.ca



**For more information ...**

**Yellowhead County: 1.800.665.6030**

**Alberta Recycle Information:**

**1.800.463.6326**

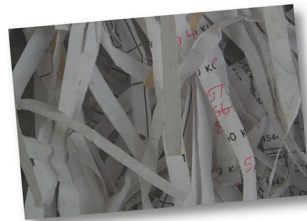
**Current trailer locations  
Niton Junction & Peers**

**1.800.665.6030**

**Please sort recyclables into the following categories:**

**1. Office Paper**

Any colour: bond, photocopy, NCR, fax, telephone message notes, 'Post It' notes or loose leaf papers. File folders, envelopes, utility bills and receipts. Paper clips and staples are OK. Shredded office paper, preferably bagged.



**2. Low Grade Paper**

Construction paper, brown paper bags, blueprints, paper egg cartons, carbon paper, sugar, flour & pet food bags.



**3. Newspaper**

This includes all newspaper, TV guides, comics, flyers, inserts & auto traders.



**4. Magazines**

All glossy magazines, catalogues flyers etc.

**5. Old Corrugated Cardboard**

Please flatten all boxes. Staples, tape or a little paper is OK.



**6. Clear Glass**

Clear glass jars, containers, window pane glass etc. Jars must have labels (low grade paper) and lids (tin or plastic) removed. Broken and whole glass is acceptable. **NO:** auto glass, coloured glass, ceramics or china.



**7. Tin Cans**

All tin, steel or aluminum cans, labels removed (low grade paper), rinsed and flattened. Tin foil is acceptable.

# Conservation Facts

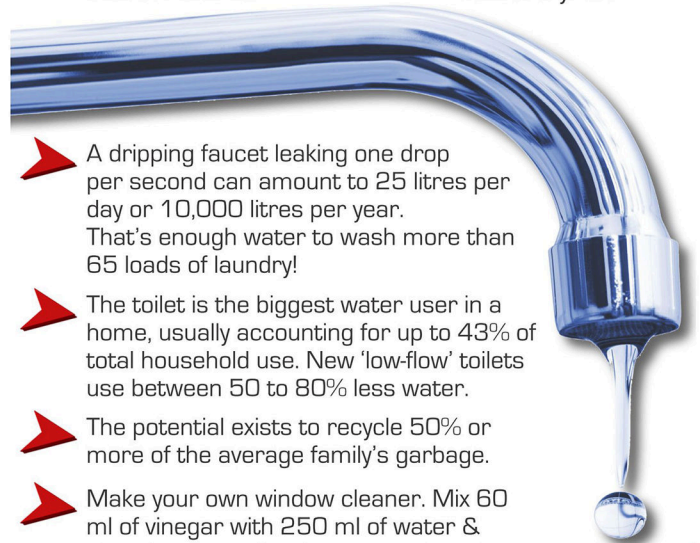


➤ Plastic milk jugs are made of the highest grade of plastic.

➤ Recycled milk jugs can be made into; fleece material, carpeting & other plastic containers

➤ Recycling beverage containers is estimated to conserve more than 189,000 barrels of crude oil per year - a savings of \$6.5 million a year!

➤ There are more than **1,500,000,000** beverage containers (excluding milk) sold in Alberta.



➤ A dripping faucet leaking one drop per second can amount to 25 litres per day or 10,000 litres per year. That's enough water to wash more than 65 loads of laundry!

➤ The toilet is the biggest water user in a home, usually accounting for up to 43% of total household use. New 'low-flow' toilets use between 50 to 80% less water.

➤ The potential exists to recycle 50% or more of the average family's garbage.

➤ Make your own window cleaner. Mix 60 ml of vinegar with 250 ml of water & store in a spray bottle.